



BUCKLE UP NNJ

Northern NJ Safe Kids/Safe Communities

Free Virtual Car Seat Check

Do you need assistance with installing your Car Seat?

We can schedule a time to meet virtually!

NNJ SK/SC has certified Child Passenger Safety Technicians ready to meet with you virtually.

Contact us for educational instruction on installation and use of your car seats.

Contact: Jackie Leach CPSTI to schedule an appointment at Jacqueline.leach@atlantichhealth.org



www.preventionworks-nj.org

Follow us on Facebook
 Safe Kids Northern New Jersey

The CPS stations are financially supported by grant funding and individual donations. A suggest donation of \$10.00 per seat is recommended at the time of services

Safety Tips for Bicyclists

Source: Pedestrian and Bicyclist Information Center (PBIC)

Always Ride with Traffic and Follow the Rules of the Road:

- You are better off riding with the flow of traffic, not against it. Crash data tells us that getting hit from behind is extremely unlikely.



- You are more predictable and visible to motorists, especially at intersections and driveways.
- Ride in a straight line, not in and out of cars, and use hand signals when turning and stopping.
- Obey traffic signs, signals, and lane markings and yield to traffic when appropriate, including pedestrians.

Don't Ride on the Sidewalk:

- Although you might think it's a safer option, motorists are simply not looking for bicyclists on the sidewalk, especially those riding against the direction of traffic.

Did you know? *In just ten minutes, the temperature in a car can rise 19 degrees.* Park. Look. Lock.

Even in moderate climates, cars can **heat up** and become deadly for kids.



PARK. LOOK. LOCK.



Safety Tips for Bicyclists, *continued*

- At every driveway and intersection, you are at greater risk of being hit by a motorist than if you were riding on the road with traffic.

- Pedestrians will thank you for riding on the road as well.
- Ride on the trail, paved shoulder, bike lane, or bike route. You still need to follow the rules of the road and watch out for your fellow travelers. Ride to the right, signal your turns, obey traffic signs and signals.

Be Predictable and Visible:

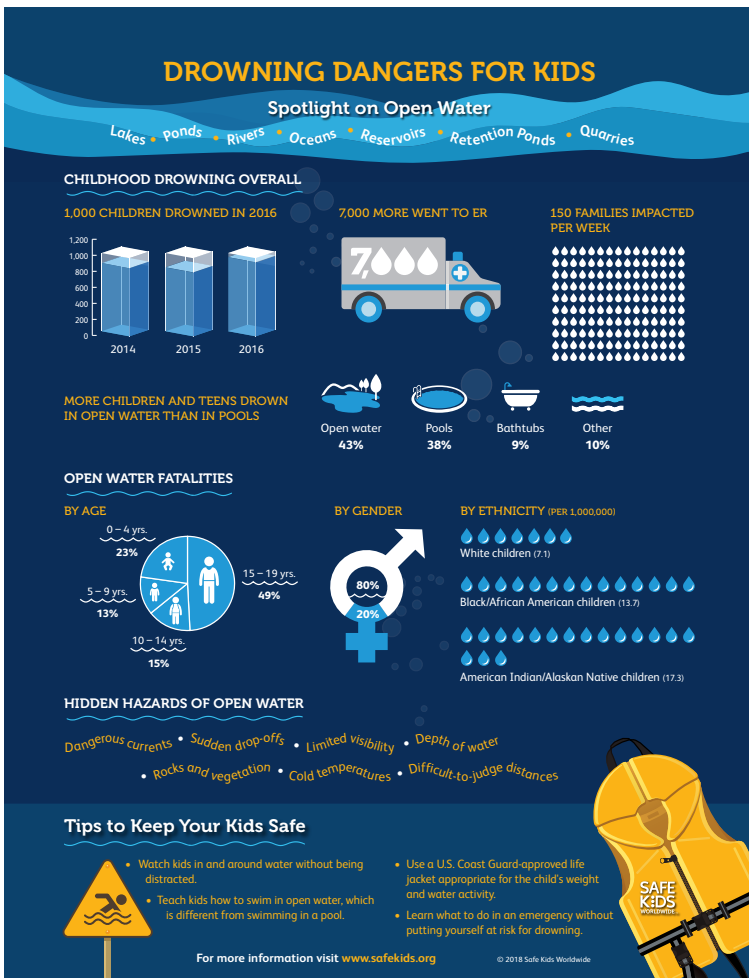
- Try not to be hesitant or do things that motorists and other travelers may not be expecting.
- Make sure everyone can see you and knows where you are and where you are going.
- If riding in the dark, use headlights, taillights, and reflectors and wear reflective materials and brightly colored clothing.
- Do not wear headphones or talk on a cell phone while bicycling.

Watch for Stuff on the Road or Trail that Might Make you Fall or Swerve:

- Rocks, trash, storm grates, wet leaves, potholes, gravel, railroad tracks, and even wet pavement markings can all send you flying.
- Also watch for parked cars, doors opening, and cars pulling in and out of driveways.

Watch for Turning Traffic:

- Most car/bike collisions happen at intersections and driveways when motorists or bicyclists are turning.
- At every intersection and driveway, keep a careful eye out for motorists turning right in front of you—you may be going faster than they think. Also, look for motorists turning left across your path. Drivers are looking for gaps in traffic and may not be paying attention to anything other than other motor vehicles.



Prevention Works is the official biannual newsletter of Northern NJ SAFE KIDS/Safe Communities. We welcome articles of interest highlighting your community or organization. Let us know how you have made your community a safe community. If you have any comments or topics you would like to see covered, please feel free to contact Karen Jean Feury, RN Phone: 973-971-4327 Fax: 973-290-7350 email: karenjean.feury@atlanticehealth.org.